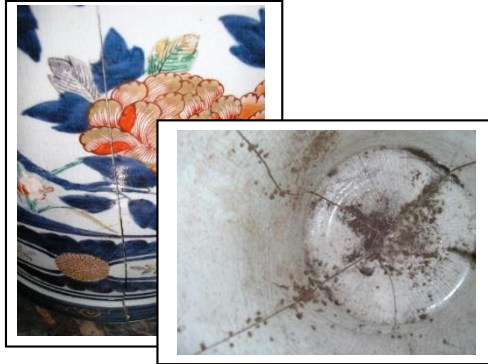




THE  
PILGRIM TRUST

AIM

Grant obtained for the Conservation of two late 17<sup>th</sup>/early 18<sup>th</sup> century Imari Baluster Vases on display in the Double Cube



*One of the vases before treatment*

*Close up of one of the Radial cracks*

*....and after treatment*

The Trustees of Wilton House would like to gratefully acknowledge receipt of a generous grant from AIM (Association of Independent Museums) Pilgrim Trust Conservation Scheme for the conservation of two Imari Baluster vases.

The two Japanese baluster vases are situated in the Double Cube Room. Dating from the late 17<sup>th</sup> or early 18<sup>th</sup> century they are painted in iron-red, underglaze-blue and gilt with flowering plants issuing from rockwork and with kidney-shaped panels.

The vases had large radial cracks, with losses in the lid and around the bottom. Dirt had built up in the cracks as well as salt deposits possibly indicating that the vases had held water or been kept in a damp environment in the past.

The conservation work was carried out by Wiltshire Conservation services, based in the Swindon and South Wiltshire History Centre in Chippenham.

The Vases are now back on display in the Double Cube Room and can be viewed during opening hours, details of which can be found on our website [www.wiltonhouse.com](http://www.wiltonhouse.com)

***Conserved with the aid of a grant from the AIM Pilgrim Trust Conservation Scheme***

*Removing the Salt deposits*

